





LIVING UNLIMITED



CONCEPT DESIGN

*Living a complete and balanced...at Artemis
is like living amidst the unlimited sky.*



KW  **CAPITAL ONE**
KELLERWILLIAMS. Real Estate

Computer generated image. The company reserves the right to change and / or correct detail without prior notice.



*Computer generated image. The company reserves the right to change and / or correct detail without prior notice.

kw  **CAPITAL ONE**
KELLER WILLIAMS Real Estate



kw  **CAPITAL ONE**
KELLERWILLIAMS Real Estate

*Computer generated image. This company reserves the right to change and / or correct detail without prior notice.





*Computer generated image. The company reserves the right to change and / or correct detail without prior notice.





GROUND FLOOR⁺

PLAN



SURROUNDINGS ^{x+}

SHOPPING PLAZA

- The Distric Em (Emporium / Emquartier)
- Gateway Ekamai
- Terminal 21
- Tesco Lotus / Big C / Max Value

EDUCATIONAL INSTITUTES

- Srivikorn School
- International School (Wells / Berkeley / NIST)
- Bangkok University

HOSPITAL

- Samitivej Hospital
- Sukhumvit Hospital
- Theptarin Hospital

PARKS

- Benchakitti Park
 - Benchasiri Park
 - Suanluang RAMA IX Park
-



PROJECT DETAILS ⁺_x

| | | |
|--------------------|---|--|
| Project Name | : | Artemis Condominium |
| Project Owner | : | CTCC Engineering Company Limited. |
| Location | : | Located on Soi On-nut Sukhumvit 77 Prakanong Bangkok |
| Detail of Building | : | 30 Storey Condominiums |
| | | <ul style="list-style-type: none">• Floor 1st Lobby / SHOP / PM office / Parking• Floor 2nd – 5th Parking lot• Floor 6th Facilities / Swimming Pool / Garden• Floor 6th – 30th Condominium Unit |
| Total of Units | : | 673 condominium units with 3 shop house |
| Room Type | : | 10 Room types |
| 1 Bedroom | : | 1B-A 26.58 SQ.M. 1B-B 30.43 SQ.M. 1B-C 35.24 SQ.M. 1B-C2 34.68 SQ.M. 1B-D 30.62 SQ.M. |
| 2 Bedrooms | : | 2B-A 53.97 SQ.M. 2B-B 46.68 SQ.M. 2B-B2 46.39 SQ.M. 2B-C 45.07 SQ.M. |
| 3 Bedrooms | : | 3B-A 74.11 SQ.M. |
| Facilities | : | Lobby, Swimming Pool, Fitness, Garden |
| Parking | : | 288 Cars |
| Price Start | : | 1.99 MB. |
| Sinking Fund | : | 500 THB / sq.m. |
| Maintenance Fee | : | 40 THB / Sq.m |



N FLOOR 6

- 1 Bedroom-A
- 1 Bedroom-B
- 1 Bedroom-C
- 1 Bedroom-C2
- 1 Bedroom-D
- 2 Bedroom-A
- 2 Bedroom-C





N FLOOR 7-21

- 1 B-A
- 1 B-B
- 1 B-C
- 1 B-C2
- 1 B-D
- 2 B-A
- 2 B-C





N FLOOR 22-24

- 1 Bedroom-A
- 1 Bedroom-B
- 1 Bedroom-C
- 1 Bedroom-C2
- 1 Bedroom-D
- 2 Bedroom-A
- 2 Bedroom-B
- 2 Bedroom-B2
- 2 Bedroom-C





N FLOOR 25-27

- 1 B-B
- 1 B-C
- 1 B-C2
- 1 B-D
- 2 B-A
- 2 B-B
- 2 B-B2
- 2 B-C
- 3 B-A





N FLOOR 28 - 30

- 1 B-B
- 1 B-C
- 1 B-C2
- 1 B-D
- 2 B-A
- 2 B-B
- 2 B-B2
- 3 B-A





*Computer generated image. The actuality remains subject to local conditions / for more information visit www.royalcanin.com

“ SEDUCTIVE NEW YORKER ”



“ SEDUCTIVE NEW YORKER ”



*Computer generated image. The company reserves the right to change and / or correct detail without prior notice.

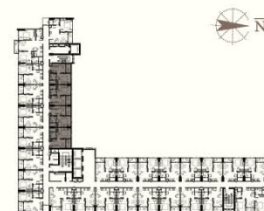
" ZEN TOUCH "



" ZEN TOUCH "

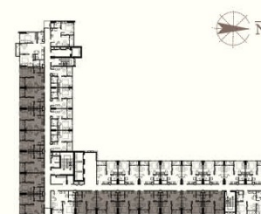


1 BEDROOM
TYPE I B - A
26.58 Sq.M.
Fl. 6-24





1 BEDROOM
TYPE I B - B
30.43 Sq.M.
Fl. 6-30



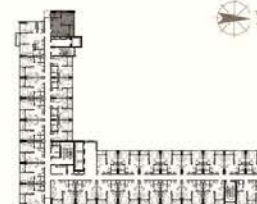


1 BEDROOM
TYPE 1 B - C1
35.24 Sq.M.
Fl. Fl. 6-30



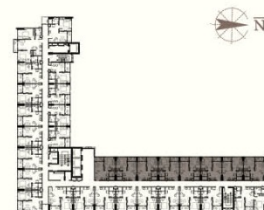


1 BEDROOM
TYPE 1 B - C2
34.68 Sq.M.
Fl. 6-30





1 BEDROOM
TYPE 1 B - D
30.62 Sq.M.
Fl. 6-30





"CLASSIC ELEGANCE"



"CLASSIC ELEGANCE"

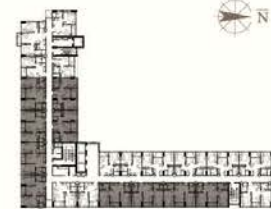


2 BEDROOM
TYPE 2 B - A
53.97 Sq.M.
Fl. 6-30





2 BEDROOM
TYPE 2 B - B 1
46.68 Sq.M.
Fl. 22-30





2 BEDROOM
TYPE 2 B - B2
46.39 Sq.M.
Fl. 22-30





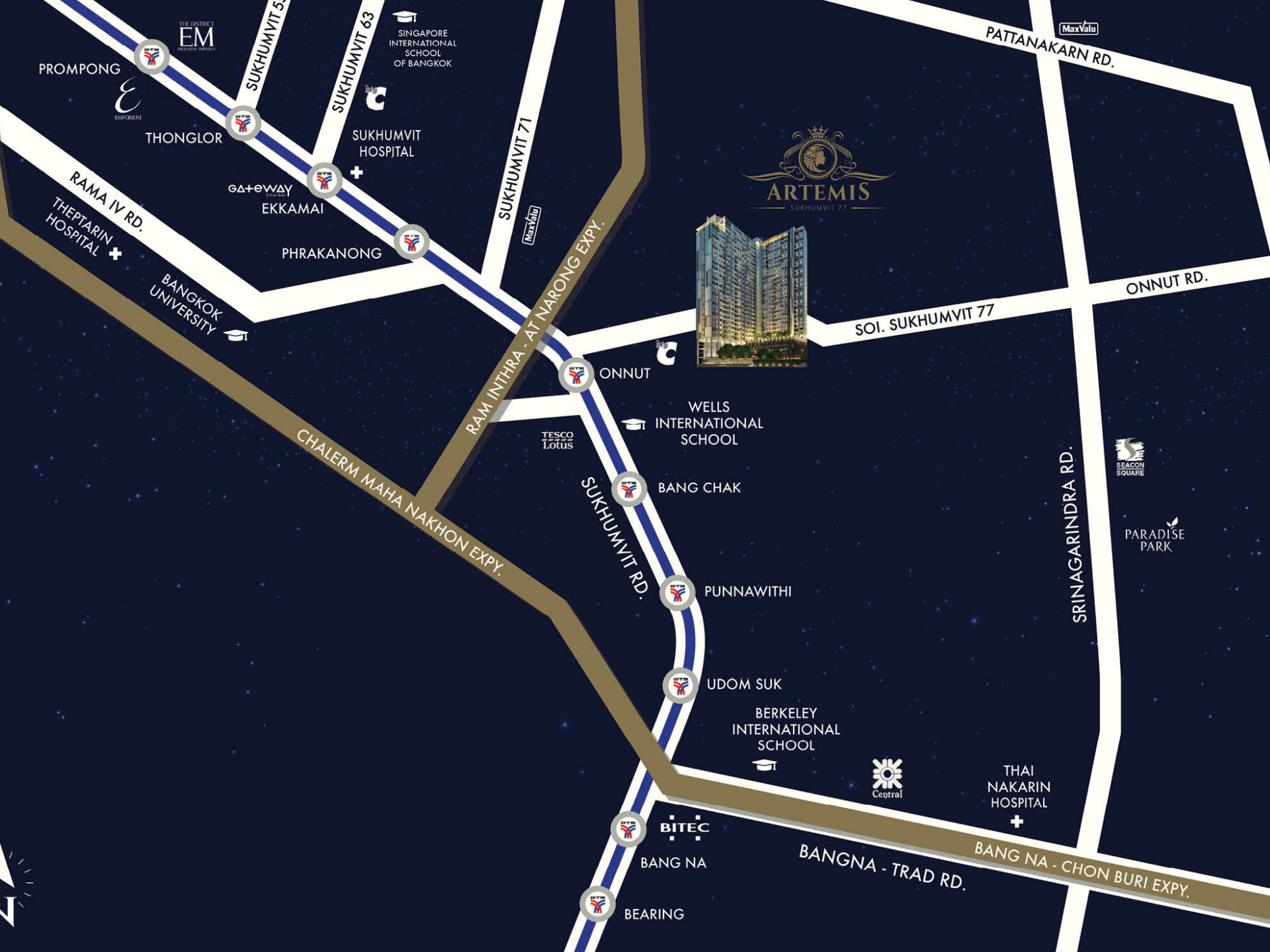
2 BEDROOM
TYPE 2 C
45.07 Sq.M.
Fl. 6-27





3 BEDROOM
TYPE 3 B - A
74.11 Sq.M.
Fl. 25-30





THE DISTRICT
EM
EMPOWERMENT

PROMPONG

THONGLOR

GA+GWAY
EKKAMAI

PHRAKANONG

SUKHUMVIT HOSPITAL

SINGAPORE INTERNATIONAL SCHOOL OF BANGKOK

SUKHUMVIT 71

RAM INTITRA - AT NARONG EXPY.

SUKHUMVIT RD.

ONNUT

WELLS INTERNATIONAL SCHOOL

BANG CHAK

PUNNAWITHI

UDOM SUK

BERKELEY INTERNATIONAL SCHOOL

BITEC

BANG NA

BEARING



ARTEMIS
SUKHUMVIT 77

SOI. SUKHUMVIT 77

PATTANAKARN RD.

ONNUT RD.

SRINAGARINDRA RD.

BANGNA - TRAD RD.

BANG NA - CHON BURI EXPY.



PARADISE PARK

THAI NAKARIN HOSPITAL





094 406 9988

www.capitaloneth.com/artemis



Project Owner: CTC Engineering Co., Ltd. Registered Capital 20,000,000 Baht, Office located at 1194 Rama 6 Rd., Rongmuang, Patumwan Bangkok. The Condominium has 30 Storey, 1 Building, 673 Units and 3 shop, Constructed on the title deed no. 8380, Suanluang Sub-District, Suanluang District, Bangkok. Land area: 3 - 3 53 Rai. The building permit No. 176/2556, complete in October, 2016. The Buyer shall pay Common Area Expenses and Sinking Fund and/or relevant any taxes to the Juristic Person subject to Article of Association and/or Land Department, as the case may be. Information provided is deemed accurate at the time of publication. The company reserves the right to change details and promotions without prior notice. *All illustrations are simulated images for advertising purposes only.